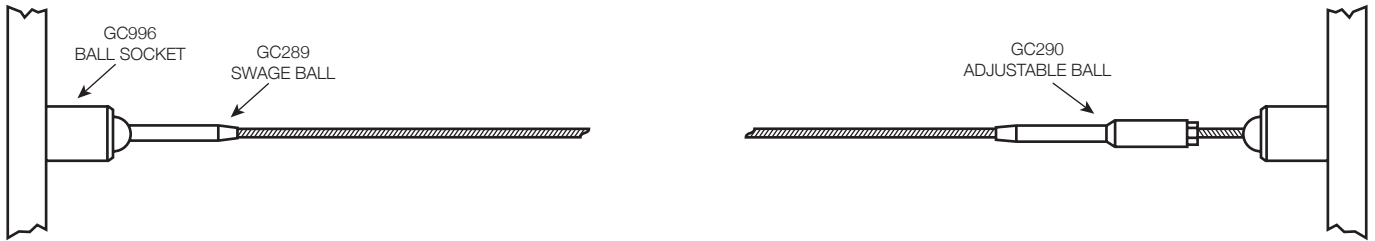




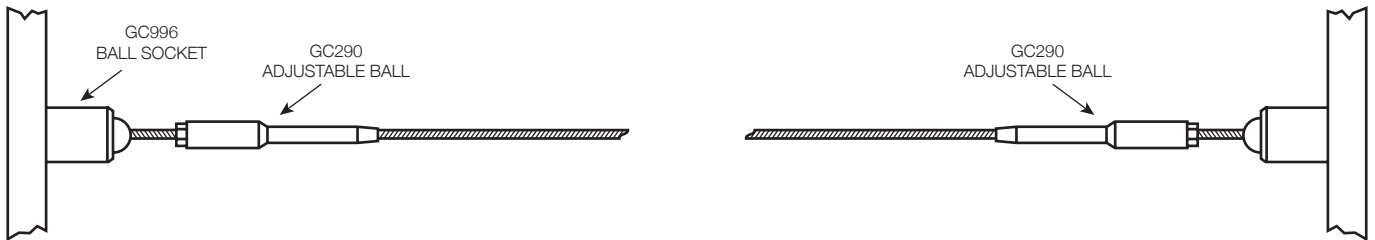
Balustrading is available in many variations, shown here are our most popular.

Should these not meet your requirements, please ring us and we will advise the best option to suit.

## System 1: Swaged ball & surface mounted socket up to 5m



## System 2: Swaged ball & surface mount sockets 5 – 10m



## System 3: Swaged ball & back mounted C-socket up to 5m



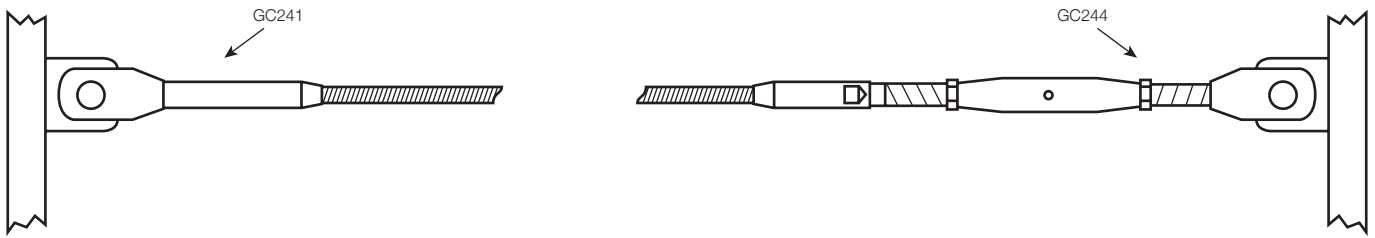
## System 4: Swaged ball & back mounted C-socket 5 - 10m



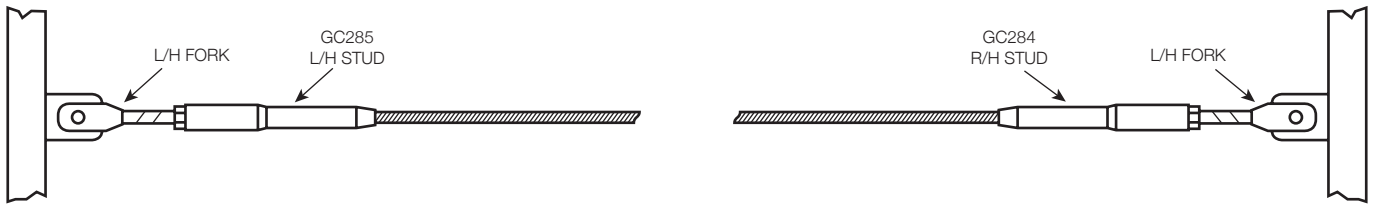
**System 5:** Swage stud with left & right hand M8 thread and welded spigots



**System 6:** Swaged fork and tensioner for connection to welded lugs



**System 7:** Left and right hand slimline adjustable forks for connection to welded lugs



**System 8:** Left and right hand adjustable forks for connection to welded lugs



**System 9:** Swage stud with metric thread both ends

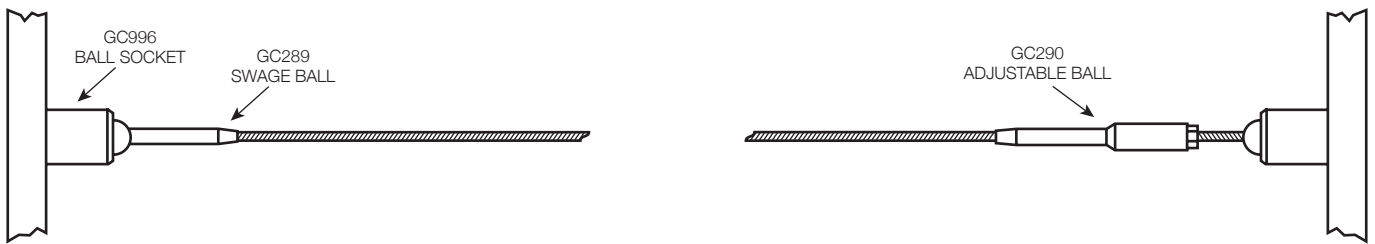


# Balustrade Systems 1, 2, 3 & 4

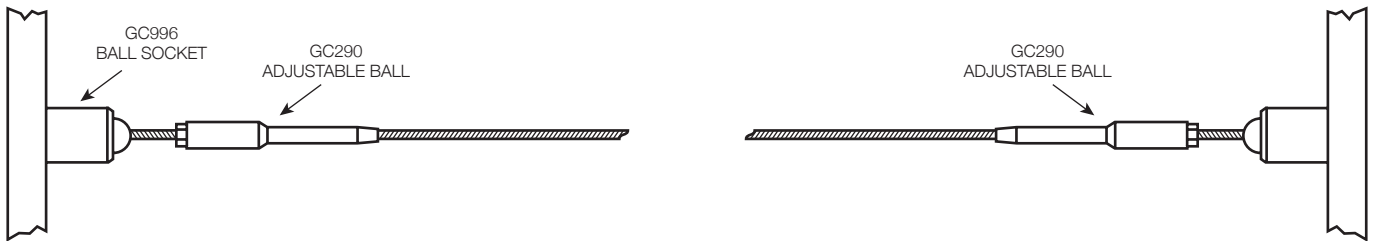
Since its introduction, the ball & socket system has rapidly become one of the most versatile and easy to install balustrading systems available.

- The ball & socket system is very easy to assemble. The wires are simply clicked into position. Once fastened the wires are tensioned by turning one end. They are easy to maintain and adjust.
- Using the ball & socket system makes it very easy to assemble multiple wires at varying angles.
- The design of the ball & socket system is sleek, elegant and extremely functional.
- The ball & socket system is ideal for staircases, vertical and horizontal balustrading. It also provides an open, exposed and uncluttered environment which is ideal for decking.

## System 1: Swaged ball & surface mounted socket up to 5m



## System 2: Swaged ball & surface mount sockets 5 – 10m



## System 3: Swaged ball & back mounted C-socket up to 5m



## System 4: Swaged ball & back mounted C-socket 5 - 10m



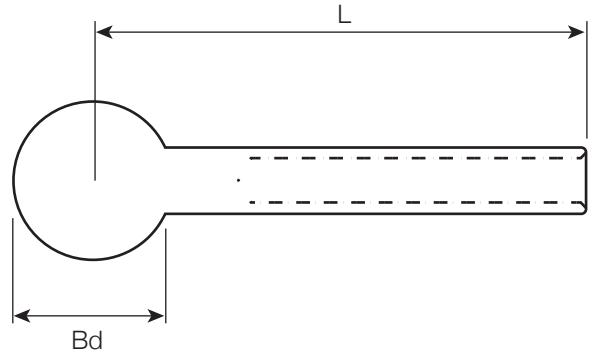
Line drawings and mechanical properties overleaf...

# Balustrade Systems 1, 2, 3 & 4

## GC289 Fixed Ball

		4mm	5mm
Cable diameter		4	5
Yield Load kN		4.9	4.9
Length	L	47	62
Ball diameter	Bd	16	16
Weight (g)		22	26

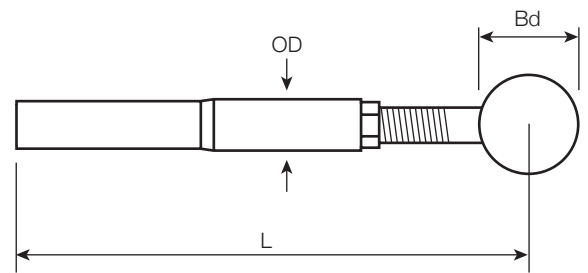
All dimensions in mm



## GC290 Adjustable Ball

		4mm	5mm
Cable diameter		4	5
Yield Load kN		4.9	4.9
Length	L	132	140
Adjustment +/-		19	19
Ball diameter	Bd	16	16
Maximum diameter	OD	9.5	9.5
Weight (g)		51	54

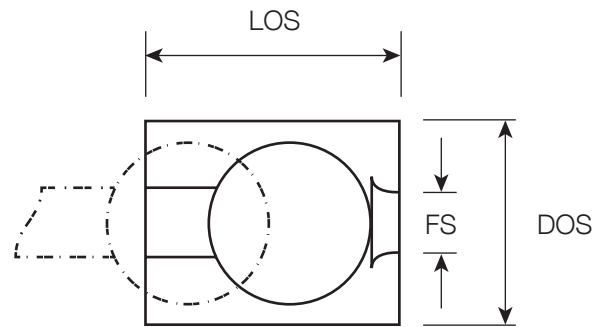
All dimensions in mm



## GC996 Surface Mounted Socket

		4mm	5mm
Cable diameter		4	5
Length	LOS	21	21
Socket diameter	DOS	22	22
Thread	FS	M6	M6
Weight (g)		35	35

All dimensions in mm



## GC998 Back Mounted C-Socket

		4mm	5mm
Cable diameter		4	5
Depth	S	7	7
Hole diameter	D	19	19
Ball centre depth	L	3	3
Weight (g)		7	7

All dimensions in mm

